

Information:

Web: [www.mhep.org](http://www.mhep.org)

[www.schwenkfelder.com](http://www.schwenkfelder.com)

215-256-3020; [info@mhep.org](mailto:info@mhep.org)

215- 679-3103;

[info@schwenkfelder.com](mailto:info@schwenkfelder.com)

Three scholarships are available for this workshop, thanks to generous support from the Pennsylvania Humanities Council. To apply for a scholarship, please send a written statement of interest on why attending this workshop would benefit you and how you plan to use what you will learn from the workshop. The letter can be sent via email: [heffners@mhep.org](mailto:heffners@mhep.org) or regular post: Sarah Heffner, Mennonite Heritage Center, 565 Yoder Rd, Harleysville, PA 19438.

This workshop is supported in part by:



Federal-State Partner  
National Endowment for the Humanities

**Mennonite Heritage Center**  
PO Box 82  
Harleysville, PA 19438-0082

NONPROFIT  
Postage Paid  
Harleysville PA  
Permit # 36

## Exploring the History and Artistry of Fraktur August 12-14, 2009



Sponsored by:  
Mennonite Heritage Center  
565 Yoder Rd, Harleysville, PA

Schwenkfelder Library  
& Heritage Center  
105 Seminary Street, Pennsburg, PA

### Study Historic Fraktur

Learn from fraktur experts about interpreting and collecting fraktur

### Workshop options include:

Tour of Historic Meetinghouses/Schoolhouses  
Learning to Letter and Draw Fraktur

## Workshop Schedule

### Day One (Wednesday)

#### Morning

Intro to Fraktur, Presenter Mary Jane Hershey MHC \*

Historic Fraktur Gallery, Presenter Joel Alderfer MHC

#### Afternoon – Art or History

**Art Track:** Fraktur Calligraphy, Presenter Louise Hutchings MHC

**History Track:** Tour of early schools/meetinghouses, Presenter Joel Alderfer MHC

**Evening -7:30:** Gottschall fraktur presentation by John Ruth MHC

### Day Two (Thursday)

#### Morning

Historic Schwenkfelder Fraktur, Presenter Candace Perry SLHC \*\*

#### Afternoon

**Art Track:** Drawing Fraktur, Presenter Louise Hutchings MHC

**History Track:** Reading old German script. Presenter Allen Viehmeyer SLHC and Philadelphia Free Library Fraktur Collection, Presenter Lisa Minardi SLHC

**Evening – 7:30:** Women and Fraktur presentation by Candace Perry – SLHC

### Day Three (Friday)

#### Morning

**Art Track:** Work on fraktur design, Presenter Louise Hutchings – MHC

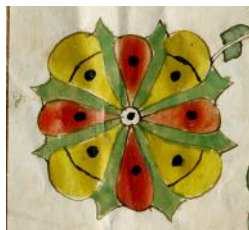
**History Track:** Appreciating and collecting fraktur, Presenter Clarke Hess MHC and

Cutting and hinging mats for fraktur with Candace Perry and Joel Alderfer MHC

**Wrap up after lunch:** informal discussion, sharing of fraktur designs, workshop evaluation moderated by Candace Perry

\* Mennonite Heritage Center

\*\* Schwenkfelder Library & Heritage Center



## Enjoy a special opportunity to study Pennsylvania German Fraktur

Explore the world of historic fraktur through the collections of the Mennonite Heritage Center and the Schwenkfelder Library & Heritage Center. The workshop features both centers' historic fraktur collections along with presentations by fraktur experts. Participants will study historic fraktur and choose one of two tracks: interpreting and collecting fraktur or drawing and learning to letter your own fraktur. Please indicate your choice of track when you register. Registration is required as participation is limited. Lunch and morning coffee will be provided during the workshop. Workshop sessions will rotate between the two heritage centers.

Presenters include Joel Alderfer, curator/librarian at the MHC; Mary Jane Hershey, fraktur scholar, collector and author; Clarke Hess, fraktur collector and author; Louise Hutchings, a fraktur artist and teacher; Lisa Minardi, assistant curator at Winterthur Museum; Candace Perry, curator at the SLHC; John L. Ruth, historian and author; Allen Viehmeyer, assoc. director of research at the SLHC and Bob Wood, author of local history titles.

## Registration

**Workshop Fee \$140 per person includes lunch each day and coffee break**

Name \_\_\_\_\_

Address \_\_\_\_\_

Phone Number \_\_\_\_\_

Email \_\_\_\_\_

### Please choose one track:

History \_\_\_\_\_

Art \_\_\_\_\_

Payment via credit card may be mailed to address below or faxed to 215-256-3023.

Visa/MC/Discover# \_\_\_\_\_

Expiration \_\_\_\_\_

Security \_\_\_\_\_

Name on card \_\_\_\_\_

Signature \_\_\_\_\_

Make all checks payable to **MHEP**. Mail to: Mennonite Heritage Center, 565 Yoder Rd., Harleysville, PA 19438-1020.

Detailed information on the workshop plus lodging and restaurant suggestions will be mailed to participants prior to the workshop

Thanks to a generous sponsor, all workshop participants will receive a copy of *This Teaching I Present: Fraktur from the Skippack & Salford Mennonite Meetinghouse Schools, 1747-1836* (Mary Jane Hershey, Good Books, 2003)